

we all

sew

made to create **BERNINA**®



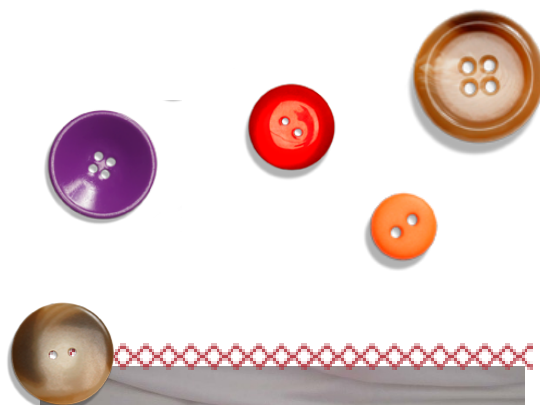
created by Stacy Schlyer

## Door Organizer

### materials and tools

- $\frac{1}{3}$  yard of heavy weight fabric such as twill, canvas, or denim
- $\frac{1}{3}$  yard of fusible interfacing
- Coordinating thread
- Scissors
- Water-soluble marking pen or tailor's chalk
- Ruler
- $\frac{1}{4}$ " presser foot (BERNINA Patchwork Foot #37) (optional)
- Keyhole template (pg 6)

Have a habit of misplacing your keys? Losing your iPod? Forgetting your coupons? Now, with this handy organizer, all your little necessities are in one convenient spot when you're ready to head out the door — right on the door knob!



### step one

Cutting:

- Cut two 5" x 11" rectangles for the organizer body
- Cut one 5" x 12" rectangle for the large pocket
- Cut one 5" x 7" rectangle for the small pocket
- Cut one 6" x 7" rectangle for the hanging pocket

### step two

*Note: Seam allowances are  $\frac{1}{4}$ " unless otherwise specified.*

- Fuse the interfacing to the wrong side of both 5" x 11" rectangles following the manufacturer's directions.



# we all *sew*

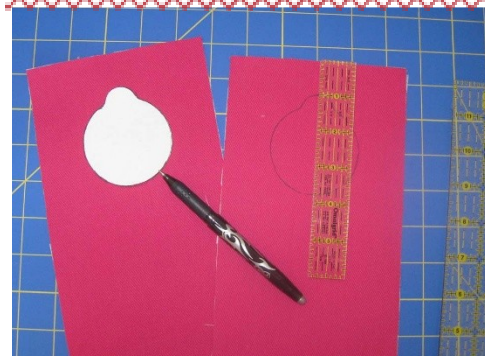
made to create **BERNINA**®

## Door Organizer

### step three

Create the Keyhole Shape:

- Measure down 1" from the top edge.
- Center the top of the keyhole template on this mark.
- Trace the template.
- Cut along the traced line.
- Repeat for the second rectangle.



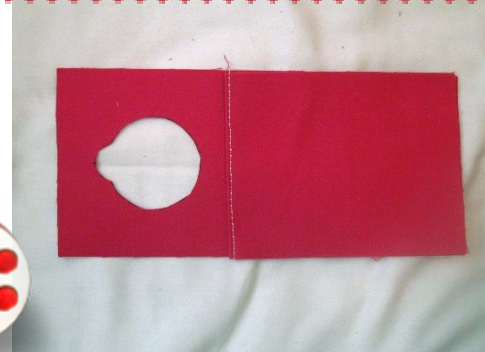
### step four

- With wrong sides together, fold the large pocket in half creating a 6" x 5" rectangle.
- Topstitch the folded edge.



### step five

- Place the large pocket on top of the right side of one organizer body piece, matching the raw edges along the side and bottom edges.
- Baste.



### step six

- With wrong sides together, fold the small pocket in half creating a 3½" x 5" rectangle.
- Topstitch the folded edge.





# we all *sew*

made to create **BERNINA**®

## Door Organizer

### step seven

- Place small pocket on top of organizer body and large pocket, matching raw edges on sides and bottom.
- Baste.

### step eight

- With wrong sides together, fold the 6" x 7" rectangle in half lengthwise. Press.
- Unfold and bring the raw edges of the long sides to the fold line. Press.

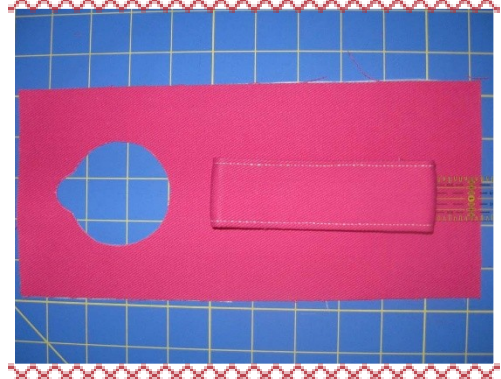
### step nine

- Refold strip along center crease.
- Topstitch close to both long edges.



### step ten

- Fold under 1" on both ends of the 7" strip.
- Measure up 1¼" from the bottom on the right side of the second 5" x 11" rectangle.
- Center bottom of strip along this mark.



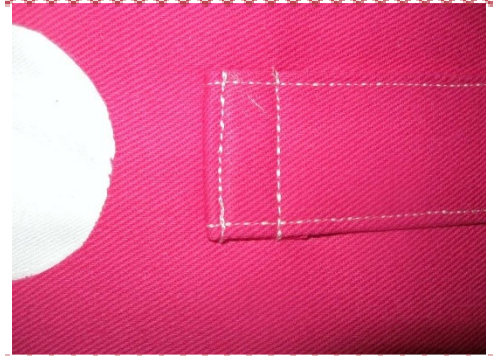
# we all sew

made to create **BERNINA**®

## Door Organizer

### step eleven

- Sew close to the folded ends of the strip, then again ½" away from the first stitching.



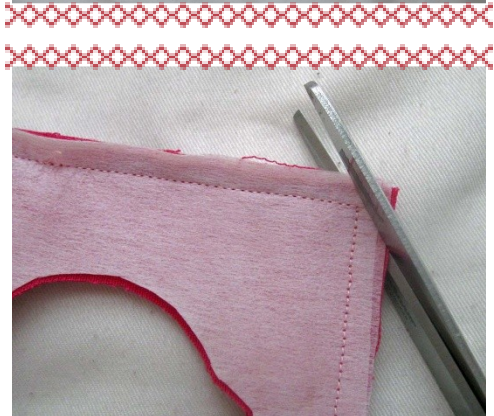
### step twelve

- With right sides together, place the two rectangles together, matching raw edges and keyhole opening.
- Stitch around the entire rectangle, leaving the keyhole open. **Do not stitch around the keyhole area!**



### step thirteen

- Clip the corners.



### step fourteen

- Turn right side out through the keyhole opening.
- Press.





# we all *sew*

made to create **BERNINA**<sup>+</sup>

## Door Organizer

### step fifteen

- Topstitch close to the finished edges.



### step sixteen

- Baste the raw edges of the keyhole opening together.



### step seventeen

- Satin stitch close to the finished edge. Position the fabric so the needle goes just to the right of the raw edges and encloses them in stitches.

*Satin stitch: A zigzag with a short stitch length so the stitches are very close to each other.*



### step eighteen

- Fill your organizer with keys, pens, letters, etc. so you never leave home without all your essentials!



we all **sew**

made to create **BERNINA**<sup>®</sup>

**Door** Organizer



template

