

Just
SEW It!Double Flange
Pillow

Created by Susan Beck



This simple flange pillow is a great beginning project that uses two coordinating fabrics. Straight seams and easy sizing make it fool-proof and fun for any sewer!



Supplies

Machine and Accessories

- Any BERNINA sewing machine
- Edgestitch Foot #10/10C
- Patchwork Foot with Guide #57
- Seam Guide

Fabric and Notions

- Two squares of outer fabric, 20" x 20"
- Two squares of inner fabric, 20" x 20"
- Construction thread
- Polyester stuffing
- 10" x 80" OESD Fuse & Fleece
- Edgestitch Foot #10/10C
- Patchwork Foot with Guide #57
- Seam Guide

Basic Sewing Supplies

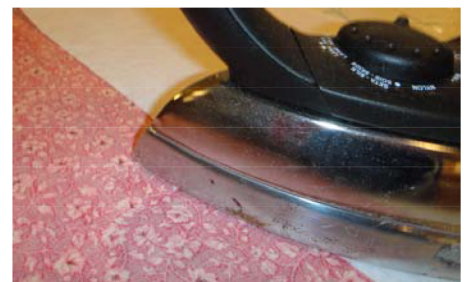
- Rotary Cutter, Mat, and ruler
- Scissors
- Fabric marker
- Straight Pins

Preparation

Determine which squares will be the outer faces of the pillow and which will be the inside of the flange. *Note: The sample shown uses the same print for the outer faces but they can be reversed so the pillow is reversible from one side to the other.*

Fuse the OESD Fuse & Fleece to the *wrong* side of the inner squares, following

the manufacturer's instructions and butting the edges of the fleece to cover the entire 20" square. *Note: The fleece is being applied to give a smooth look to the pillow after it is filled with polyester stuffing.*



Pillow Directions

Place one outer square and one inner square right sides together.

Using Patchwork with Guide Foot #57 and a ¼" seam, sew along all four sides, leaving a 4"-5" opening on one side for turning.

Trim the corners and turn the squares right side out and press, folding the edges of the openings to the inside.

Using Edgestitch Foot #10/10C/10D, edgestitch all four edges of each square, closing the opening in the process.



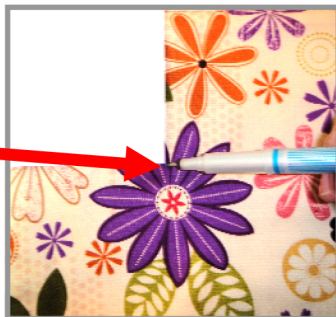
You now have two reversible squares of fabric.



Pin the two pieces together with the desired fabrics facing outward.

Cut a 3" square of cardstock. Place it in each corner on the front of the pillow and mark the lower inner corner.

Mark a dot in each corner as shown; these will be the pivot points when stitching the flange

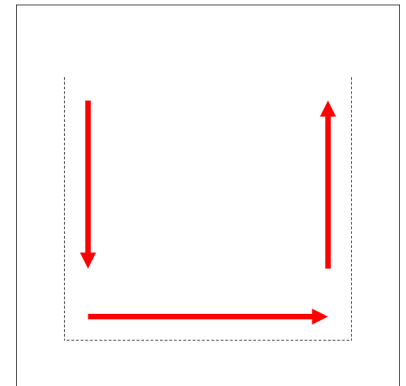


Attach Reverse Pattern Foot #1/1C/1D on the machine and attach the seam guide to the back of it. Set the guide 3" from the needle.

Position the guide to follow the outer edge of the pillow as the flange is stitched.

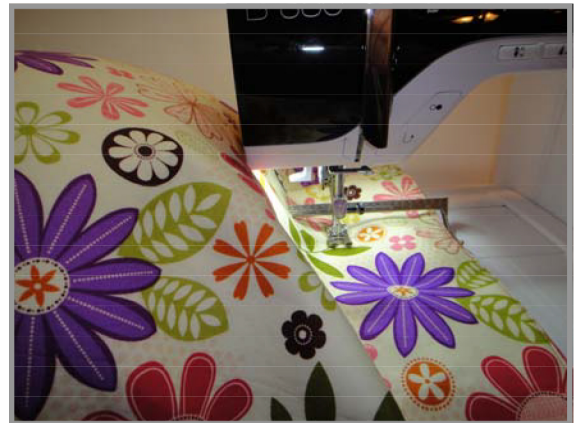


Sew three sides of the flange, starting at one upper mark, going across the bottom and back up to the opposite upper mark.



Fill the pillow with polyester stuffing, making sure it gets into the corners.

Push the stuffing down into the pillow to allow the pillow to be placed under the needle to stitch the last side of the flange closed. Knead the pillow to evenly distribute the stuffing.



Visit www.berninausa.com for additional projects!