

Stardust Blue Quilt Yardage



Fabric A: 2-1/2 yards
9632-50



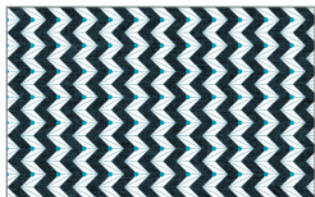
Fabric B: 2-1/4 yards
9636-11



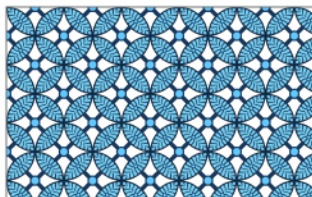
Fabric C: 1-1/2 yards
9639P-08



Fabric D: 7/8 yard
9630P-50



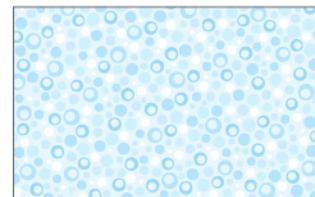
Fabric E: 1-1/8 yards
9634P-11



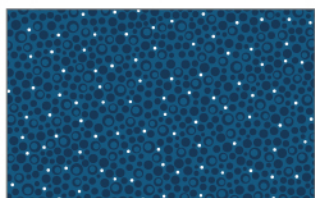
Fabric F: 1/2 yard
9633P-50



Fabric G: 3/4 yard
9631P-50



Fabric H: 1-3/4 yards
9635P-05



Fabric I: 3/4 yard
9639P-11



Fabric J: 1-1/4 yards
9636-50

**Note: You will also need
6 yards of backing fabric!**

For the embroidered option you will also use...



Fabric K: 2/3 yard
9636-05



Fabric L: 2/3 yard
9636P-09

Note: The optional embroidery and quilting motifs for this quilt are available as part of the BERNINA Celestial Lights Embroidery Collection.

Coordinating Isacord embroidery threads include: 0015, 3730, 3743, 3830, and 4032.

If embroidering you will also need OESD Ultra Clean and Tear and OESD Fusible Woven.

For the non-embroidered option you will also use...



Fabric M: 1/2 yard
9628P-50

Stardust Red Quilt Yardage



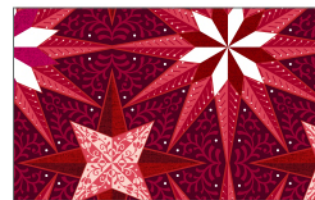
Fabric A: 2-1/2 yards
9632-02



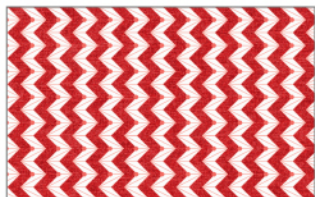
Fabric B: 2-1/4 yards
9636-10



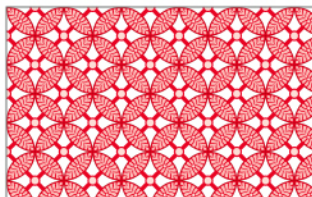
Fabric C: 1-1/2 yards
9639P-13



Fabric D: 7/8 yard
9630P-10



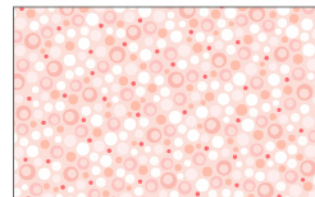
Fabric E: 1-1/8 yards
9634P-10



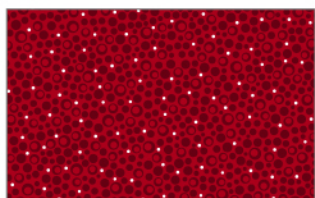
Fabric F: 1/2 yard
9633P-10



Fabric G: 3/4 yard
9631P-10



Fabric H: 1-3/4 yards
9635P-02



Fabric I: 3/4 yard
9639P-10



Fabric J: 1-1/4 yards
9636-26

Note: You will also need
6 yards of backing fabric!

For the embroidered option you will also use...



Fabric K: 2/3 yard
9636-02



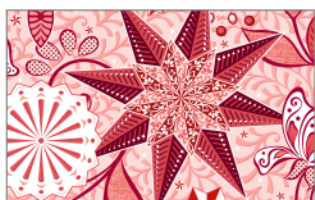
Fabric L: 2/3 yard
9636P-09

Note: The optional embroidery and quilting motifs for this quilt are available as part of the BERNINA Celestial Lights Embroidery Collection.

Coordinating Isacord embroidery threads include: 0015, 1753, 1840, 1900, and 1912.

If embroidering you will also need OESD Ultra Clean and Tear and OESD Fusible Woven.

For the non-embroidered option you will also use...



Fabric M: 1/2 yard
9628P-26