

Embroidered Birth Announcement Banner



SUPPLIES:

- 1/2 yd main fabric (canvas or duck cloth)
- 1/2 yd backing fabric (quilting cotton)
- Isacord embroidery threads
- Fabric marking pen
- Thread snips
- Fray Check
- Embroidery needles size 75
- OESD Fusible Woven
- OESD PolyMesh Cut Away Stabilizer
- OESD Stitch20 Wash Away Stabilizer
- Magnetic wood print hanger

DESIGN FILES

[Pink Floral Wreath #82022-14 from the collection Home at Heart from EmbroideryOnline.com](#)

MACHINES & ACCESSORIES

BERNINA Embroidery Software V 8.2 DesignerPlus

BERNINA 790 PLUS

- Embroidery module
- Drop Shaped Embroidery Foot #26
- Midi, Maxi, or Jumbo Hoop

BERNINA L 890

Layout Design in Software V 8.2

Start the design by laying out what you would like the banner to say.

- In the left toolbar, under Digitize, select the Lettering tool.



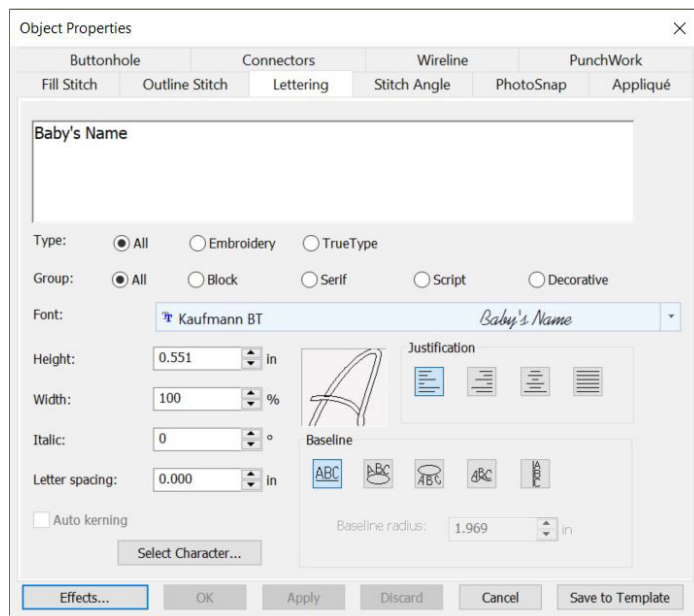
- Click anywhere in the design space and type the first row of lettering (i.e. Baby's Name). Press Enter on your keyboard.

Baby's Name

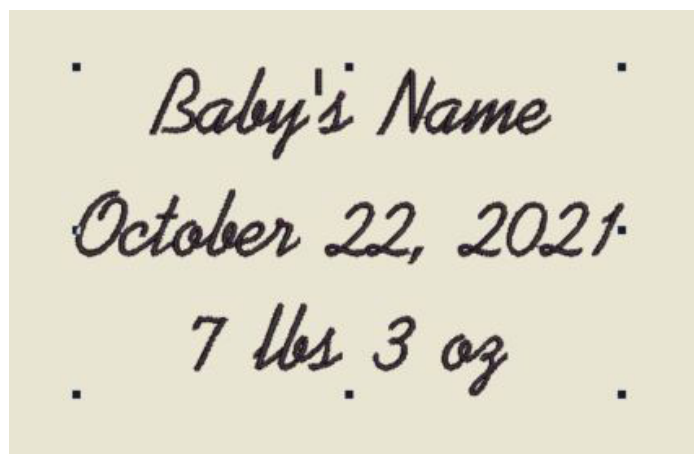
- Double click the lettering to open the Object Properties menu.
- Click the Fonts drop-down menu to select the desired decorative font. Click Apply then OK.

TIP: There are tons of fonts built in to your embroidery software but any TrueType font can be used to digitize! Try your favorites from other programs on your computer or download more decorative fonts from the internet.

Embroidered Birth Announcement Banner



- Copy and paste the Baby's Name to create a second line of lettering. Double click this second line.
- In the Object Properties, replace "Baby's Name" with the birth date. Click Apply then OK.
- Repeat this process to create a third line of lettering, this time with the birth weight.
- Select all three rows of lettering. In the left toolbar, under Arrange, select Align Centers Vertically.
- With all three lines of lettering selected, select Group.



Next, we will insert the wreath design and finalize our layout.

- In the toolbar at the top of the screen, select File then Insert Embroidery.
- Locate the wreath embroidery file 82022-14.art.

TIP: Whenever editing a purchased embroidery design in software, use the .ART version of the file rather than the machine file (i.e. .EXP, .JEF, .PES etc). This file type holds more data and will result in a better machine file after any editing or size changes are made.

- Select the lettering and the wreath design. Select Align Centers Vertically and Align Centers Horizontally.

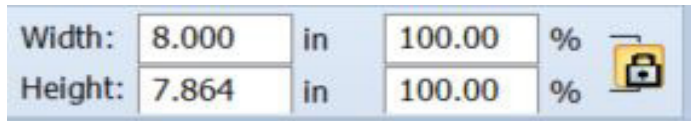


The lettering is now centered in the negative space of the wreath, but the wreath will overlap the text. At this point, you must determine how large you would like the finished design to be. This will determine whether you make the wreath larger or the text smaller in order for the two pieces to fit.

If stitching on a 7 or 8 Series machine, I suggest making the wreath larger.

Embroidered Birth Announcement Banner

- Select the wreath design. Increase the width to 8".

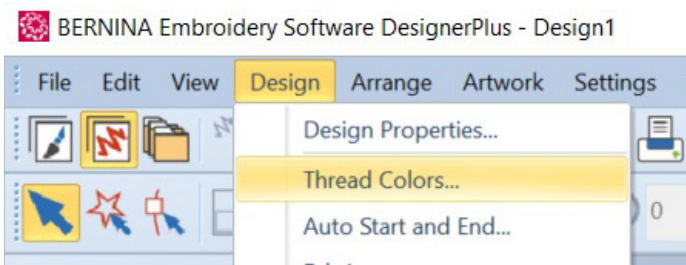


- Ungroup the three lines of lettering.
- Position each row within the negative space of the wreath until the design feels visually balanced.
- Re-group the lettering.
- Group the lettering with the wreath design.

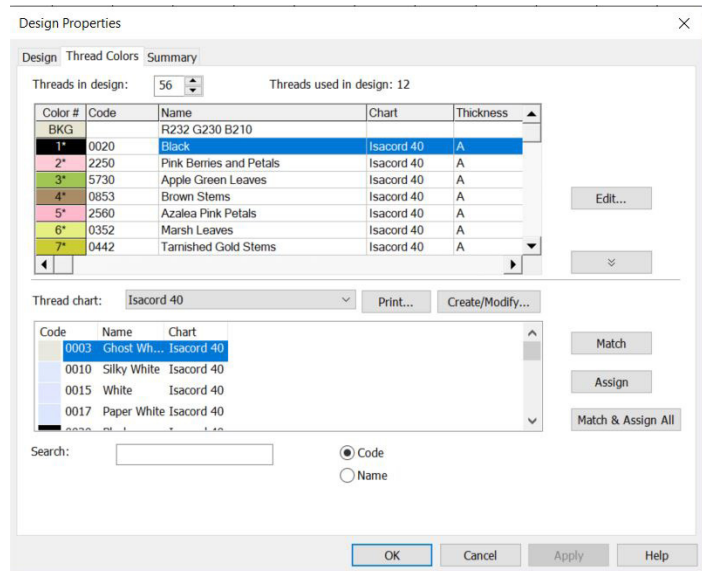


Finally, we will re-color the design in software. While this isn't necessary, it is a great way to audition thread colors.

- At the toolbar at the top of the screen, select Design then Thread Colors.



- Here you can see the 12 thread colors used in the embroidery design.



- To reassign a thread color, select the thread from the top list. Then, type the new thread color number into the Search field toward the bottom of the window.
- Select Apply to see the change on screen.
- Continue through the thread list until you are satisfied with the design.

NOTE: This is a great way to see the design in the thread colors you actually have and even combine brands by choosing a different thread chart. This is also a great way to see your design if you choose to condense the design to fewer color changes.

- Save the design to your computer as an .ART80 for future reference or editing.
- Export the design to a USB stick for stitching.
- Print the design to use as a template.

Prepare Your Fabric

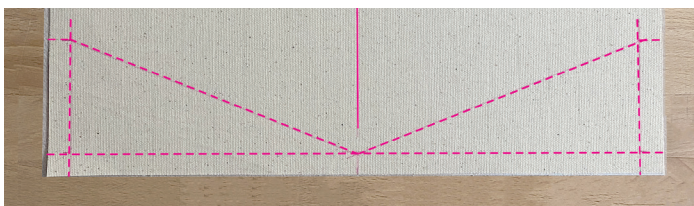
- Cut your main fabric to 15" x 18".
- Cut a piece of OESD Fusible Woven to 15" x 18" and fuse to the wrong side of the main fabric.

Embroidered Birth Announcement Banner



To place and align your design, you will need to add some markings to your fabric for reference.

- Mark a line across the bottom 1/2" up from the raw edge and 1/2" in from the left and right sides for a seam allowance.
- Make a small mark along the left and right lines 3" up from the bottom edge.
- Draw a long line marking the vertical center of the fabric.
- Draw two lines running from the small left and right markings down to where the center line meets the bottom seam allowance.



These markings outline the pointed bottom of the banner.

- Determine the desired length of your banner. For example, my sample is 13" long.

- Draw a horizontal line 13" up from the bottom point of the banner.
- Finally, draw a horizontal line halfway between the top line and the bottom point.

You should now have a large crosshair at the center of your banner.



- Cut out the printed design template and match the vertical and horizontal center lines with the crosshair on your fabric.



Embroidered Birth Announcement Banner

Use this as one final opportunity to proof your design. If any changes need to be made, now is the last chance to do so.

- Add a layer of OESD PolyMesh Cut Away stabilizer to the wrong side of the fabric.
- Using the plastic hoop template to center the crosshair, hoop all three layers in your embroidery hoop.

Embroider the Design

- Plug your USB stick with the embroidery design into the B 790 PLUS.
- Open the banner embroidery file.



- Select the Information menu.
- Select Pinpoint Placement. Select the Grid.



- Attach the embroidery hoop to your machine.
- Select different nodes that fall on the vertical and

horizontal center lines to check your placement through hooping.

- Select the center node. Use the Multi-function Knobs to move the hoop so that the needle falls directly on the center of the crosshair on your fabric.



- Select Set to lock this point.
- Select a second node. I suggest either the middle left or right points.
- Use the bottom Multi-function Knob to move the hoop up or down so that the needle lands directly on the corresponding marked line.
- Select Set to lock the second point.



Embroidered Birth Announcement Banner

The design is now perfectly centered and positioned. All that's left to do is stitch out the design.

- Select the needle icon to move to the Stitchout screen.
- Select the Basting Box icon to have the machine sew a basting box around the design.
- Select the scissor icon to cut jump stitches.

TIP: When an icon is outlined in yellow, it is active.



- Press and hold the Start/Stop button to begin embroidering the design.

Finishing the Banner

The banner will be finished with an easy, decorative overlocker stitch.

- Remove the fabric from the embroidery hoop.
- Press the embroidery with the right side down on either a soft wool pressing mat or press cloth.



- Cut your backing fabric to 15" x 18 to match your main fabric. Adhere to the back side with spray adhesive.
- Measure and mark out your banner shape/measurements again.



After we embroider on fabric, it tends to shrink in slightly. By marking out our banner again after stitching, we can accommodate for any change in the size of the fabric as well as any potential errors in placement of the design.

- Cut five 3" wide strips of OESD StitchH20 that are longer than each of the five sides of your banner.
- On the L 890, select the 2-thread blanket stitch wide (LN) which is stitch #28.



Embroidered Birth Announcement Banner

- Follow the setup wizard in the machine (through Guided Mode) or simply set the machine through Expert Mode.



NOTE: With this blanket stitch, the needle thread is the thread you will see from the right side of the banner. Keep this in mind as you thread the machine.

- Test your stitch using scrap fabric and a scrap of StitchH20.

TIP: You should always test your overlocker stitches! Different fabrics and threads and even machines all stitch a bit differently. Make sure that your settings are giving you a balanced stitch by testing first.

- Lay one strip of StitchH20 on the right side of the fabric, covering one of the short sides creating the bottom point of the banner.
- Place the fabric under the front toe of the presser foot, lining the drawn line up directly in front of the cutting knife on the machine.



- Serge all the way down this first edge.
- Pull the StitchH20 away from the banner to open up the stitch. The result will be our needle threads going across the edge to mimic the look of a blanket stitch.



- Gently tear away the StitchH20. If any remains in the seam, run a wet cotton swab along the edge to dissolve the stabilizer.
- Repeat this process to sew the next short bottom edge, then the left and right sides, and ending with the top edge.



- Weave the thread chains in to the back side of the stitch by about 1".
- Trim threads and secure with Fray Check.
- Sandwich the top edge of the banner in the magnetic wood print hanger and decorate!